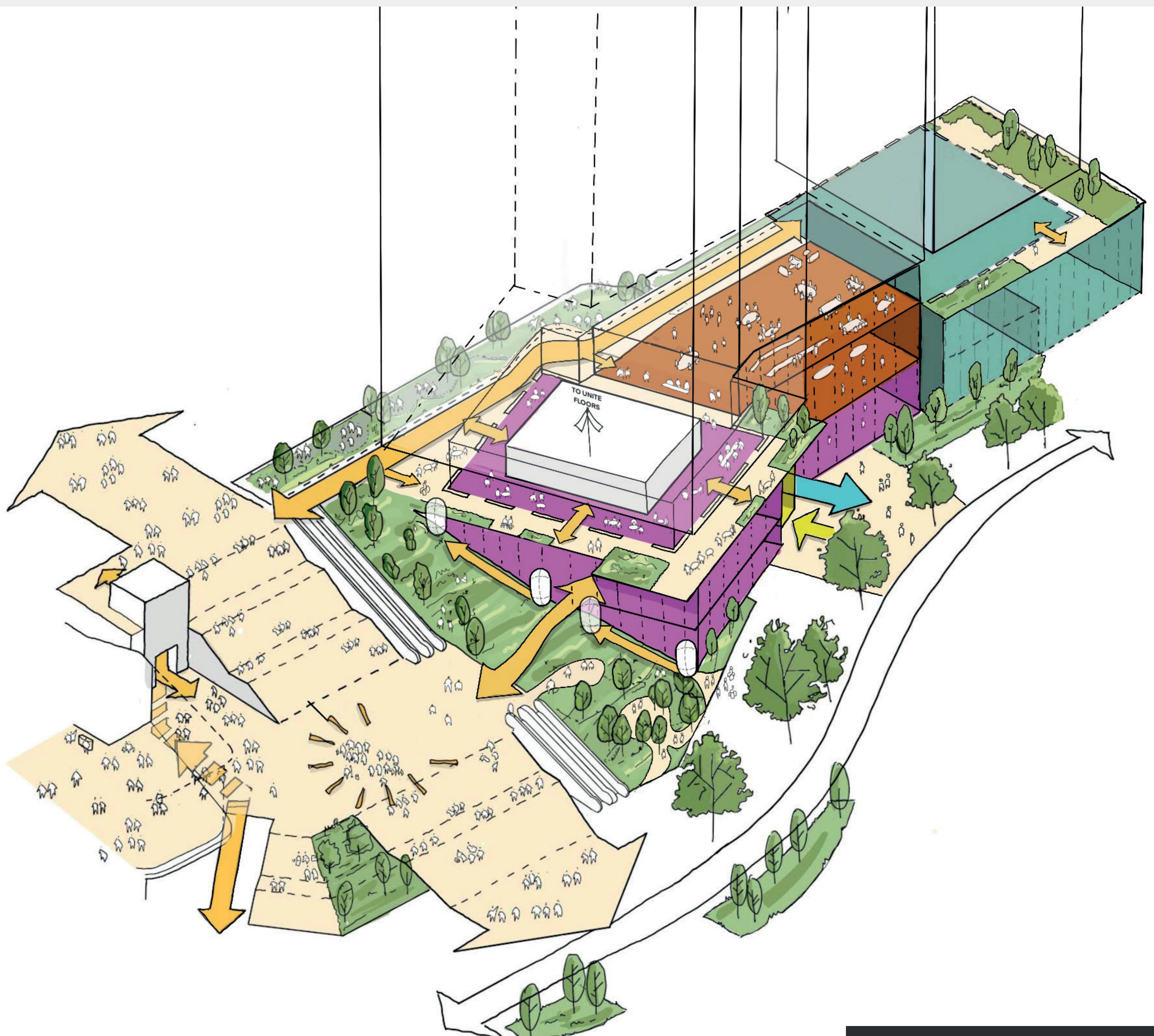


PUBLIC REALM

- In September 2021 we reached out to the community around Stratford to ask what ground floor uses you'd like to see. Many of you identified parks, retail and workspace as desirable.
- Our plans have responded to these findings and we've tried to deliver something new and different which can improve the area and be worthy of such a prominent site.
- At street level the scheme will deliver a new terraced park open to the public, creating much-needed new green space in the centre of Stratford.
- The street edge to Great Eastern Road will be open and inviting, enhancing the public realm.
- Retail and workspace across four floors open to local and independent businesses, creating a truly mixed-use building.
- A brand-new public entrance to Stratford Underground Station.



Sketch showing public paths through proposed park